

JUKI-ShuHaRi can be introduced with ease through the smartphone app and cloud service.

Free registration

**Smartphone app for supporting job site works**

Free-of-charge smartphone app "JUKI-ShuHaRi" can be installed to your smartphone to support your job site work.



**Personal computer software for supporting management work**

JUKI-ShuHaRi cloud service is accessible from your personal computer. It is necessary to log in to the ShuHaRi cloud service website before using it.



**How to use the JUKI-ShuHaRi sewing machine inspection support system**

JUKI-ShuHaRi application form [https://www.juki.co.jp/industrial\\_j/service\\_j/shuhari\\_en/form.php](https://www.juki.co.jp/industrial_j/service_j/shuhari_en/form.php)



1. Enter required items in the usage application form on the JUKI website.
2. You will receive an email notification after your registration is completed.
3. The email provides the URL of the ShuHaRi app download page and the URL of the JUKI-ShuHaRi cloud service website.
4. Access the JUKI-ShuHaRi cloud service website from your personal computer to add presumed users in your factory. Users added afterwards will also receive email notifications.
5. Download the ShuHaRi app from the notification email and start using it.

**Specifications**

JUKI-ShuHaRi is a cloud-based system that can be used only by connecting your smartphone and PC to web browsers without installing software. No need to hassle with software installations. It should be noted that the factory's in-house Wi-Fi has to be used for communication within the factory.

Item	Smartphone app	Cloud app
OS	Smartphone, tablet: Android 7.0 or later *1	Windows 10
Operating environment	Install the ShuHaRi app	Google Chrome (browser)
Language	Japanese / English *2	
Price	Free of charge *3	

\*1 iOS will be supported from the next version of JUKI-ShuHaRi and beyond.  
 \*2 Available languages will be added from time to time.  
 \*3 App can be used at no cost. It should be noted, however, cost of internet access during the download process and use of the JUKI-ShuHaRi must be borne by the customer.

**Sewing machine inspection support system**

守 破 離

J U K I - S h u H a R i

A problem solution service intended for maintenance managers has finally been launched!

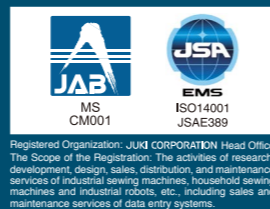


Make your daily maintenance job a breeze with your smartphone

Easy maintenance management started up with a cloud service



"ShuHaRi (守破離)" is a word describing the stages of learning to mastery in tea ceremony, Kendo (fencing), etc. JUKI names it for wishing to grow and develop ourselves with customers.



Registered Organization: JUKI CORPORATION Head Office  
 The Scope of the Registration: The activities of research, development, design, sales, distribution, and maintenance services of industrial sewing machines, household sewing machines and industrial robots, etc., including sales and maintenance services of data entry systems.



2-11-1, TSURUMAKI, TAMA-SHI, TOKYO 206-8551, JAPAN  
 PHONE: (81) 42-357-2370  
 FAX: (81) 42-357-2274  
<https://www.juki.co.jp/en>

Juki Italia S.p.A.  
 Via Bergamo 4 • 20045 Lainate (MI)  
 Tel: 02 937579.1  
[www.juki.it](http://www.juki.it) • e-mail: [info@juki.it](mailto:info@juki.it)

\* Specifications and appearance are subject to change without prior notice for improvement.  
 \* Read the instruction manual before putting the machine into service to ensure safety.  
 \* This catalogue prints with environment-friendly soyink on recycle paper.  
 \* Paper from responsible sources FSC™ C001712

Sudden machine failures during operation

Frequent replacement of parts

Daily inspections are not affordable

Sewing machine inspection is not easy to carry out

It takes too much time to hunt for the parts numbers of parts to be replaced

Parts ordering errors occur frequently



# Easy daily maintenance using the JUKI-ShuHaRi offers a shortcut to solving problems related to sewing machine maintenance!

Free registration

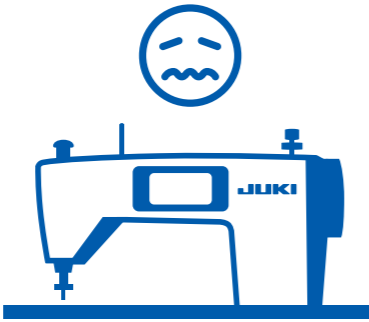
Installation cost is zero



⚠ Sudden machine failures during operation...

Daily inspections are not affordable...

It takes too much time to hunt for the parts numbers of parts to be replaced...



Frequent replacement of parts...

Sewing machine inspection is not easy to carry out...

Parts ordering errors occur frequently...

**JUKI has determined to provide JUKI's unique maintenance knowhows at no charge to help customers solve problems related to maintenance of the sewing machine.**

JUKI-ShuHaRi is a cloud-based "sewing machine inspection support system" consisting of the ShuHaRi app that supports operators with daily sewing machine inspections and the JUKI-ShuHaRi cloud service that allows maintenance managers to keep track of the sewing machine inspection status.

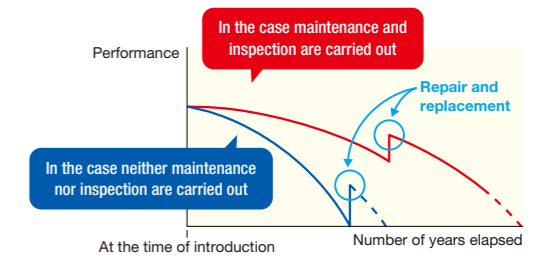
## How important it is! Why JUKI recommends daily inspections.

### Sudden machine failures take place less often!

The frequency of sudden sewing machine breakdowns and troubles is substantially reduced by carrying out routine maintenance procedures such as cleaning, oiling, consumable parts replacement, etc.

### The service life of the sewing machine is extended!

A strictly enforced routine of five-minute daily inspections and periodical inspections extends the service life of the sewing machine.



An example of chart of change in the service life (in years)

This means that both productivity and seam quality are improved.

Cloud-based management

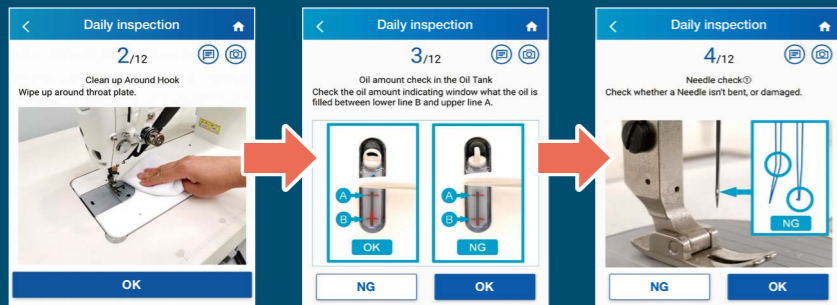
Support of the inspection work with the ShuHaRi app

Operators in the production site may be in charge of daily inspections from tomorrow

### Daily inspection

The sewing machine inspection takes only five minutes a day!

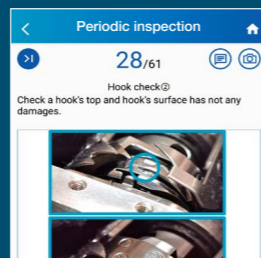
JUKI-ShuHaRi provides step-by-step instructions and important points with pictures to guide the operator along the way. The operator performs an inspection simply by following the instructions by the Shuhari app on his or her smartphone screen. The entire daily inspection takes only about five minutes per machine.



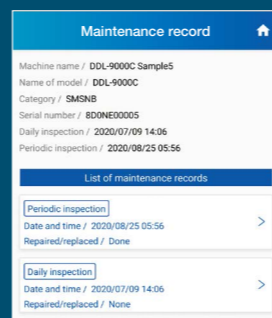
### Periodical inspection

With the JUKI-ShuHaRi, the maintenance manager is able to carry out periodical inspections with ease

JUKI-ShuHaRi also supports the periodical inspection (once a month, three months or six months) that is carried out thoroughly by the maintenance manager. Many of sewing machine parts are consumable. It is therefore necessary to carry out periodical inspections in order to use the sewing machine for a long time with care. JUKI-ShuHaRi provides easy-to-understand guides about complicated inspection points of the sewing machine by the Shuhari app on the smartphone.



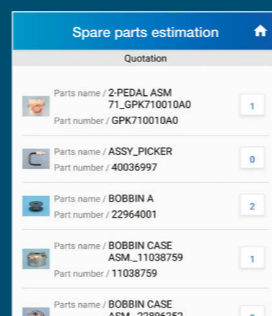
### Maintenance record



No need for preparation of reports on the inspection results!

Inspection results and parts-replacement histories are saved in the maintenance records automatically. The operator no longer needs to prepare daily reports.

### Estimate for spare parts



Replacement parts are automatically selected! Ordering errors and unnecessary parts cost are reduced

If the inspection shows that a certain part needs to be replaced, the target replacement part and part number are automatically displayed on screen. Any operator using the app can select the correct replacement part. The part number is automatically saved in the maintenance records.

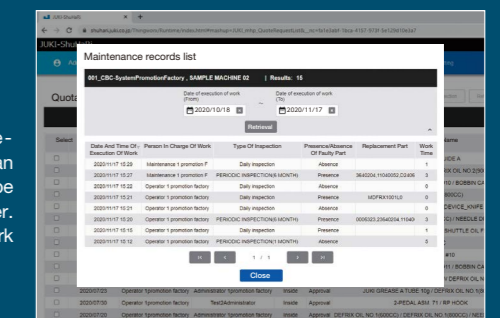
JUKI-ShuHaRi cloud service supports the maintenance management!

All maintenance-related information are listed on tables to ensure easy maintenance management!

### Sewing machine condition management

Condition of sewing machines in possession can be grasped real time

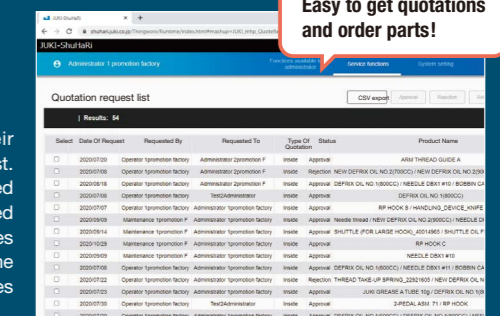
Inspection results, inspection history, parts-replacement aggregated data and ordering data can be seen and the accumulated information can be managed collectively on the personal computer. The efficiency of sewing machine management work rises dramatically.



### Management of spare parts and parts ordering

Order placement for parts and spare parts management are easily handled

The parts requested by operators with their ShuHaRi apps are collectively managed on a list. The parts requested by the operators are checked against the inventory to accurately grasp the required quantities, enabling requests for collective quotes from parts manufacturers. This contributes to the reduction of the occurrence of ordering mistakes and cost losses.



Easy to get quotations and order parts!